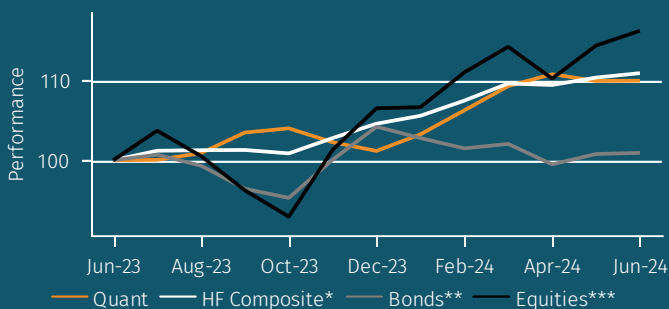


Quant strategy analytics pack H1 2024

Inside this report:

Master strategy performance	3
Sub-strategy performance	10
Performance dispersion	11
Assets and flows	14
Terms and conditions	15
Definitions	16

MASTER STRATEGY vs INDICES NET RETURN (1 YR)



About Aurum

Aurum is an investment management firm focused on selecting hedge funds and managing fund of hedge fund portfolios for some of the world's most sophisticated investors.

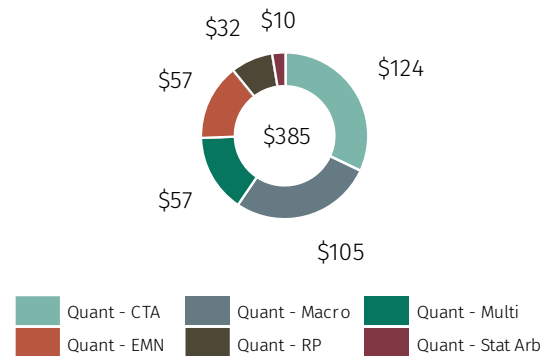
Aurum conducts extensive research and analysis on hedge funds and hedge fund industry trends. This research paper is designed to provide data and insights with the objective of helping investors to better understand hedge funds and their benefits.

*HF Composite = Aurum Hedge Fund Data Engine Asset Weighted Composite Index.
 **Bonds = Bloomberg Global Aggregate Bond Index.
 ***Equities = S&P Global BMI.
 Risk Free Rate = period average of 3-month LIBOR-SOFR.

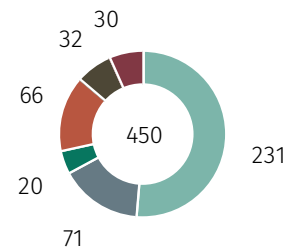
All figures and charts use asset weighted net returns unless otherwise stated. All Hedge Fund data is sourced from Aurum Hedge Fund Data Engine. Data included in this report is dated as at 15 July 2024.

For definitions on how the Strategies and Sub-Strategies are defined please refer to <https://www.aurum.com/hedge-fund-strategy-definitions/>, and for information on index methodology, weighting and composition please refer to <https://www.aurum.com/aurum-strategy-engine/>

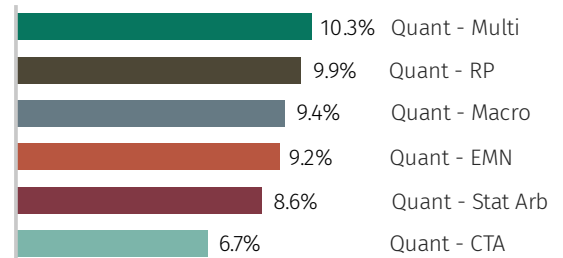
AUM (\$BN) – JUNE 2024



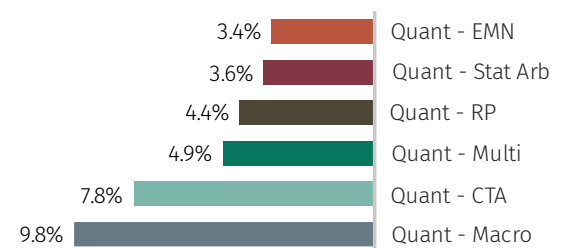
NO. OF FUNDS – JUNE 2024



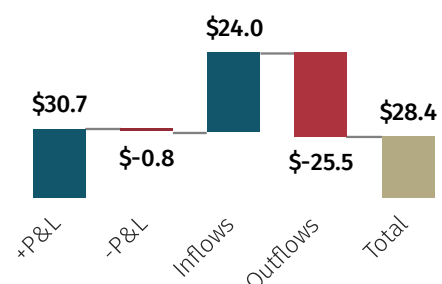
SUB-STRATEGY NET RETURN (H1)



STANDARD DEVIATION (1 YR)



AUM CHANGE \$BN (H1)



NET RETURN OF MASTER AND SUB STRATEGIES (1 YR)

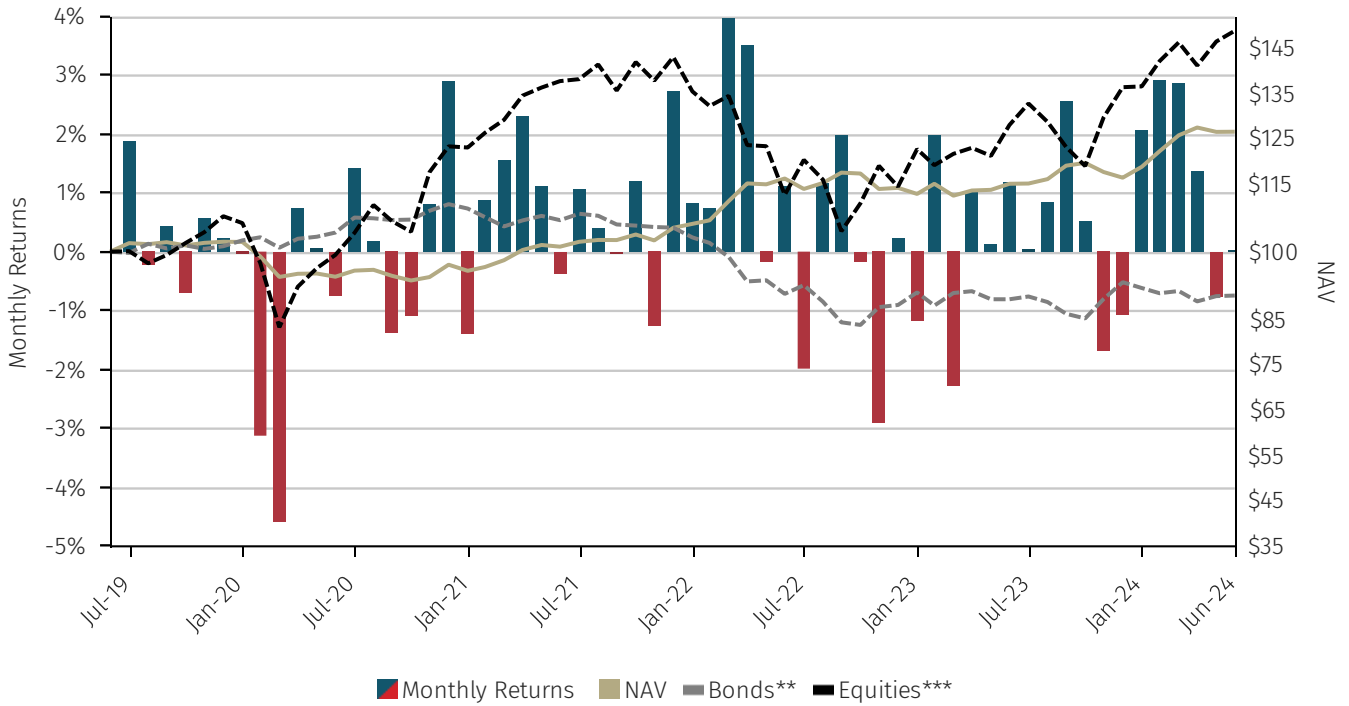
	Jul-23	Aug-23	Sep-23	Oct-23	Nov-23	Dec-23	Jan-24	Feb-24	Mar-24	Apr-24	May-24	Jun-24	YTD	1 YR
Quant	0.05%	0.85%	2.56%	0.51%	-1.69%	-1.07%	2.07%	2.92%	2.87%	1.37%	-0.76%	0.03%	8.74%	10.01%
Quant - EMN	0.56%	1.45%	1.91%	1.50%	1.85%	-0.23%	3.32%	0.05%	1.37%	1.32%	0.64%	2.19%	9.19%	17.09%
Quant - Multi	-0.06%	1.38%	2.42%	1.48%	1.69%	-1.14%	3.06%	1.65%	2.63%	-0.13%	-0.38%	3.10%	10.28%	16.74%
Quant - RP	0.97%	0.72%	0.37%	-0.82%	2.25%	1.02%	2.45%	1.95%	3.40%	-0.93%	1.65%	1.06%	9.91%	14.95%
Quant - Stat Arb	0.59%	0.28%	1.63%	1.42%	1.56%	-1.17%	1.71%	0.74%	1.94%	0.03%	1.02%	2.86%	8.57%	13.31%
Quant - Macro	-0.01%	2.00%	3.11%	1.45%	-4.48%	-2.97%	2.13%	4.27%	3.15%	3.16%	-2.01%	-1.52%	9.36%	8.14%
Quant - CTA	-0.36%	-0.53%	3.06%	-0.82%	-3.34%	-0.39%	0.96%	4.13%	3.34%	1.31%	-1.26%	-1.83%	6.69%	4.06%
HF Composite*	1.19%	0.07%	0.02%	-0.42%	1.91%	1.76%	0.95%	1.81%	2.00%	-0.17%	0.85%	0.51%	6.08%	10.96%
Bonds**	0.69%	-1.37%	-2.92%	-1.20%	5.04%	4.16%	-1.38%	-1.26%	0.55%	-2.52%	1.31%	0.14%	-3.16%	0.93%
Equities***	3.72%	-3.08%	-4.29%	-3.44%	9.05%	5.16%	0.13%	4.10%	2.91%	-3.50%	3.76%	1.63%	9.15%	16.29%

NET RETURN (5 YR) PERIOD TO JUNE 2024

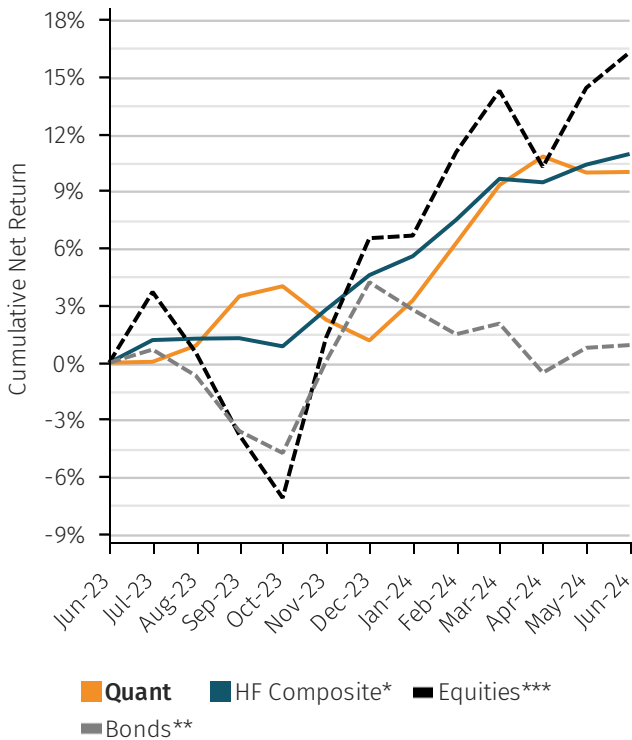
Performance	2024	2023	2022	2021	2020	5Yr CAR	5Yr Vol	5Yr Sharpe
Quant	8.74%	1.97%	8.40%	8.41%	-4.97%	4.82%	5.73%	0.43
Quant - Multi	10.28%	10.22%	12.19%	11.06%	-0.32%	9.18%	4.97%	1.31
Quant - Stat Arb	8.57%	9.67%	5.25%	6.60%	-0.46%	5.65%	4.11%	0.77
Quant - CTA	6.69%	-3.68%	14.93%	7.90%	0.80%	5.56%	8.12%	0.41
Quant - RP	9.91%	10.47%	-4.42%	13.57%	-7.28%	4.34%	6.82%	0.30
Quant - EMN	9.19%	8.72%	5.49%	12.93%	-14.99%	4.29%	7.75%	0.27
Quant - Macro	9.36%	-1.38%	6.96%	4.35%	-4.01%	3.48%	8.66%	0.16
HF Composite*	6.08%	8.26%	-2.37%	7.81%	9.06%	6.40%	5.84%	0.68
Bonds**	-3.16%	5.72%	-16.25%	-4.71%	9.20%	-2.02%	7.47%	-0.56
Equities***	9.15%	19.24%	-20.04%	16.02%	14.34%	8.29%	17.72%	0.40

Master strategy performance

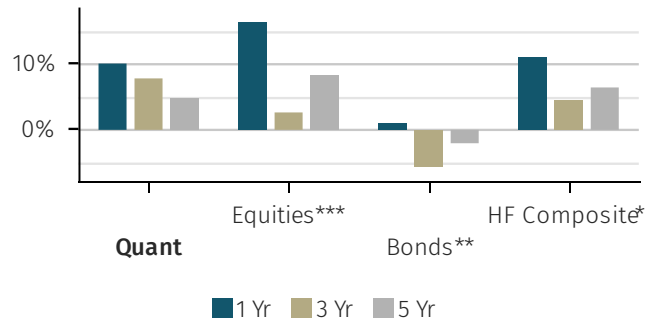
NET MONTHLY RETURN (5 YR)



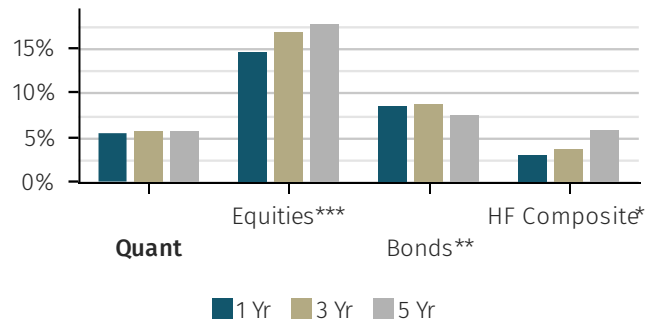
COMPARATIVE RETURN VS HF COMPOSITE (1 YR)



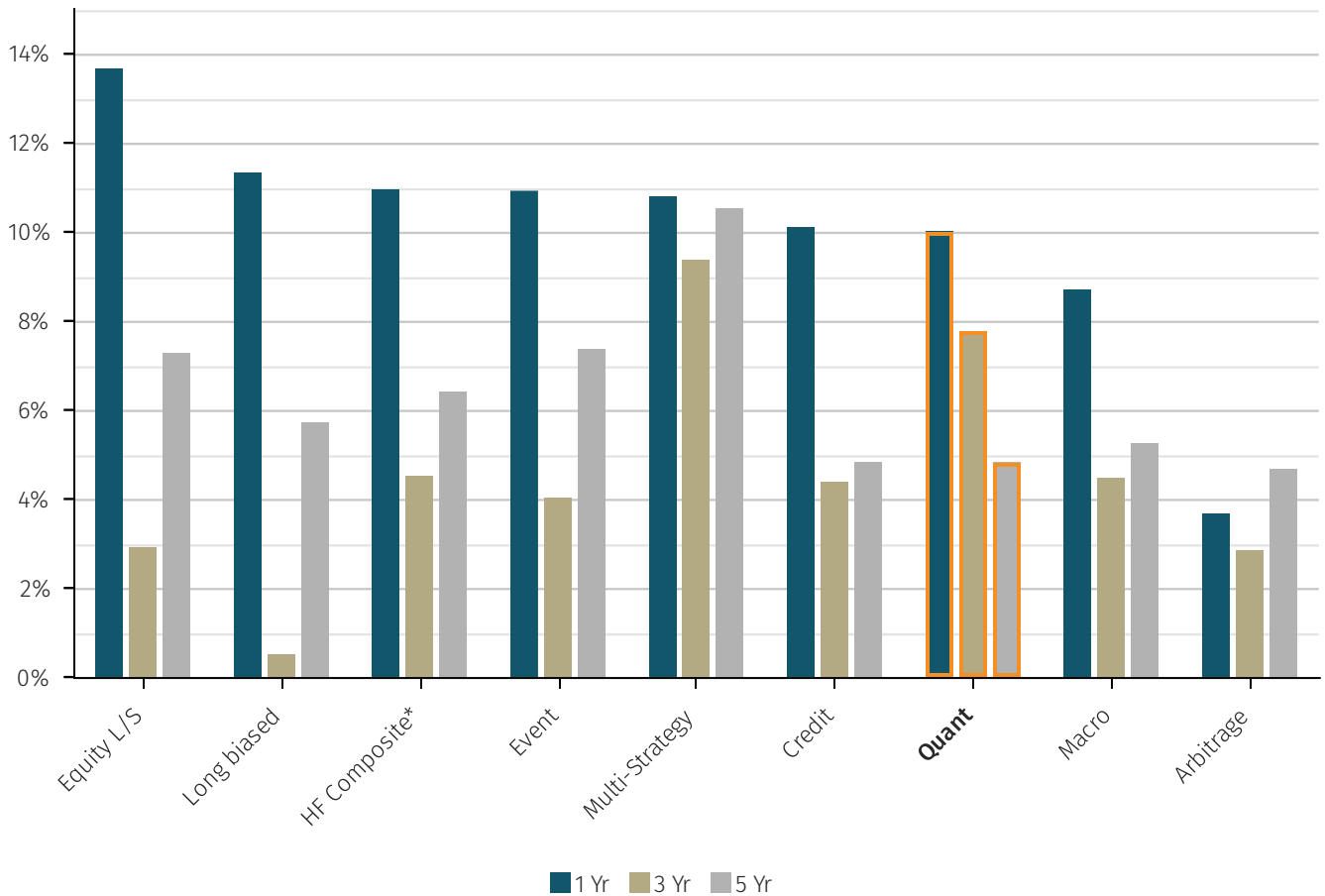
NET RETURN (ANNUALISED)



VOLATILITY (ANNUALISED)



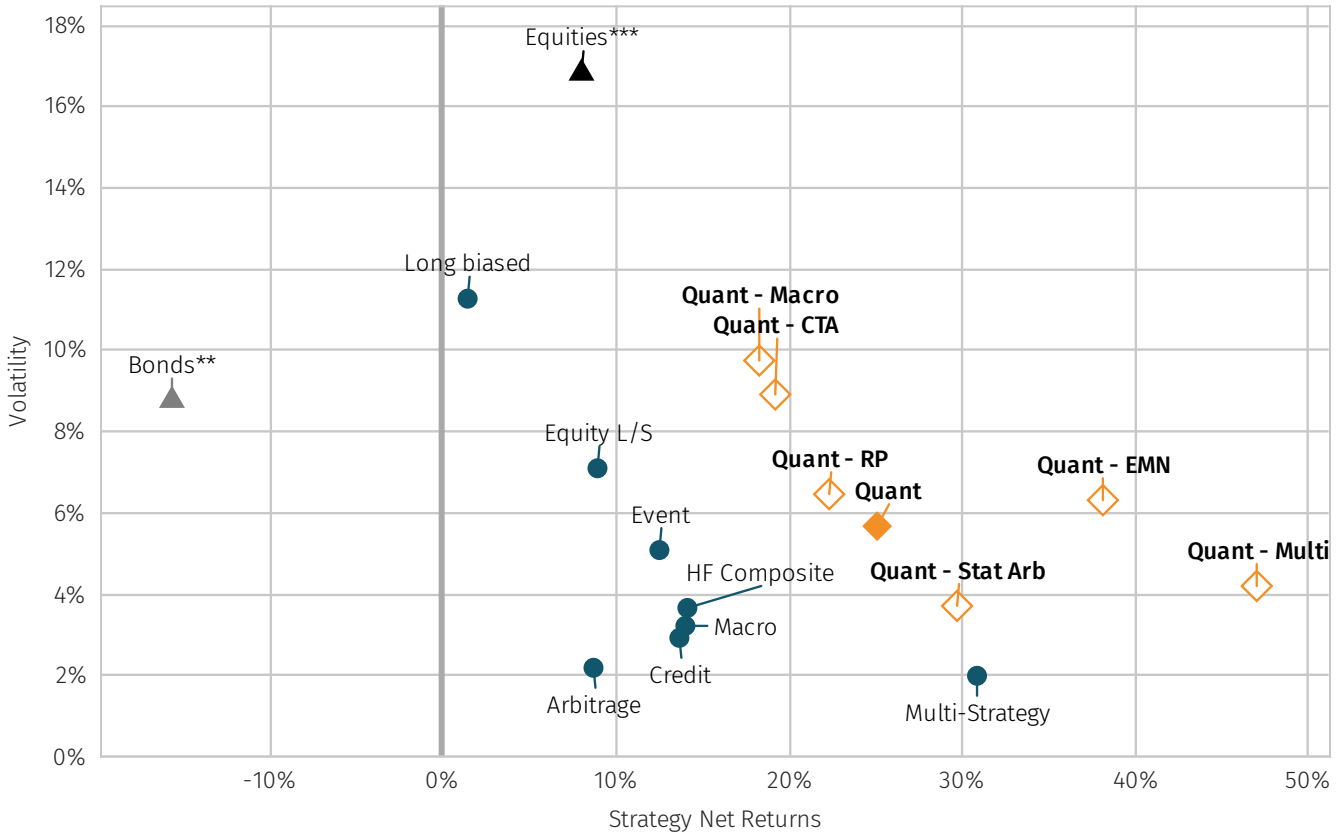
MASTER STRATEGY NET ANNUALISED RETURNS



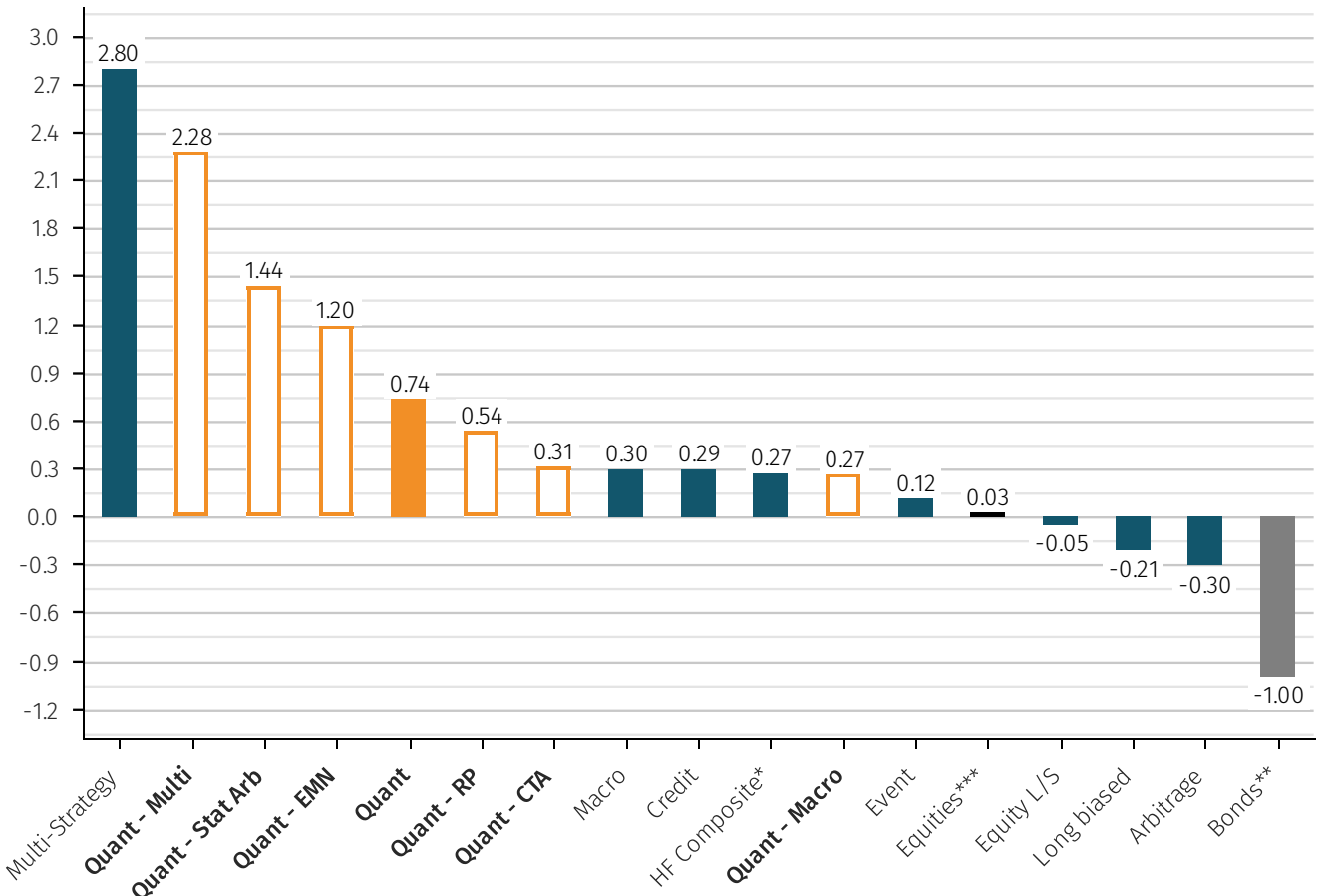
HIERARCHICAL ANNUALISED NET RETURN TO JUNE 2024

6 MONTHS	1 YEAR	3 YEAR	5 YEAR	10 YEAR
Quant 18.2%	Equity L/S 13.7%	Multi-Strategy 9.4%	Multi-Strategy 10.5%	Multi-Strategy 7.9%
Equity L/S 17.0%	Long biased 11.3%	Quant 7.8%	Event 7.4%	Equity L/S 5.3%
Multi-Strategy 12.6%	HF Composite* 11.0%	HF Composite* 4.5%	Equity L/S 7.3%	Event 5.1%
HF Composite* 12.5%	Event 10.9%	Macro 4.5%	HF Composite* 6.4%	HF Composite* 4.7%
Long biased 11.3%	Multi-Strategy 10.8%	Credit 4.4%	Long biased 5.7%	Long biased 4.3%
Credit 10.0%	Credit 10.1%	Event 4.0%	Macro 5.2%	Credit 4.0%
Event 9.0%	Quant 10.0%	Equity L/S 2.9%	Credit 4.8%	Quant 4.0%
Macro 7.0%	Macro 8.7%	Arbitrage 2.8%	Quant 4.8%	Macro 3.9%
Arbitrage 4.3%	Arbitrage 3.7%	Long biased 0.5%	Arbitrage 4.7%	Arbitrage 2.6%

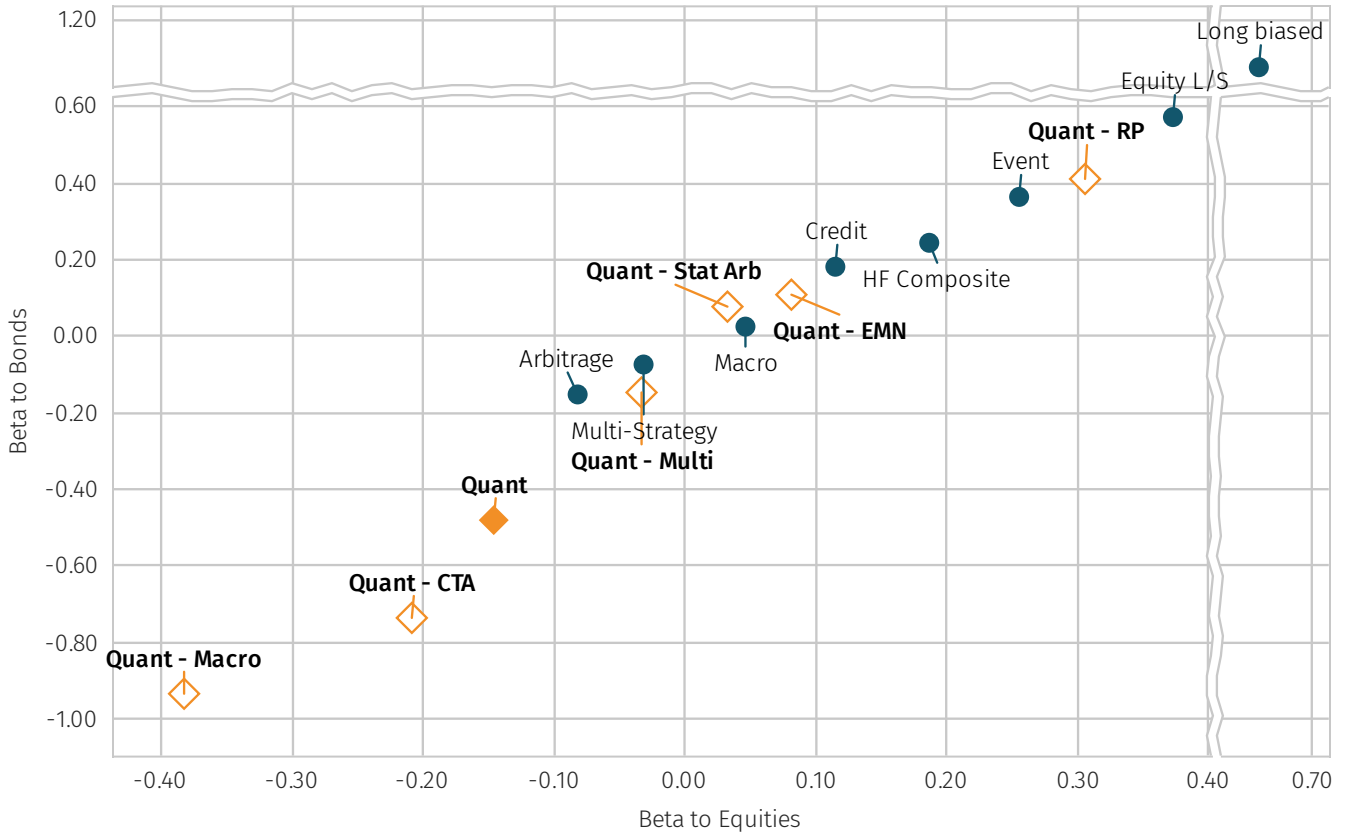
STRATEGY NET TOTAL RETURN VS ANNUALISED VOL (3 YR)



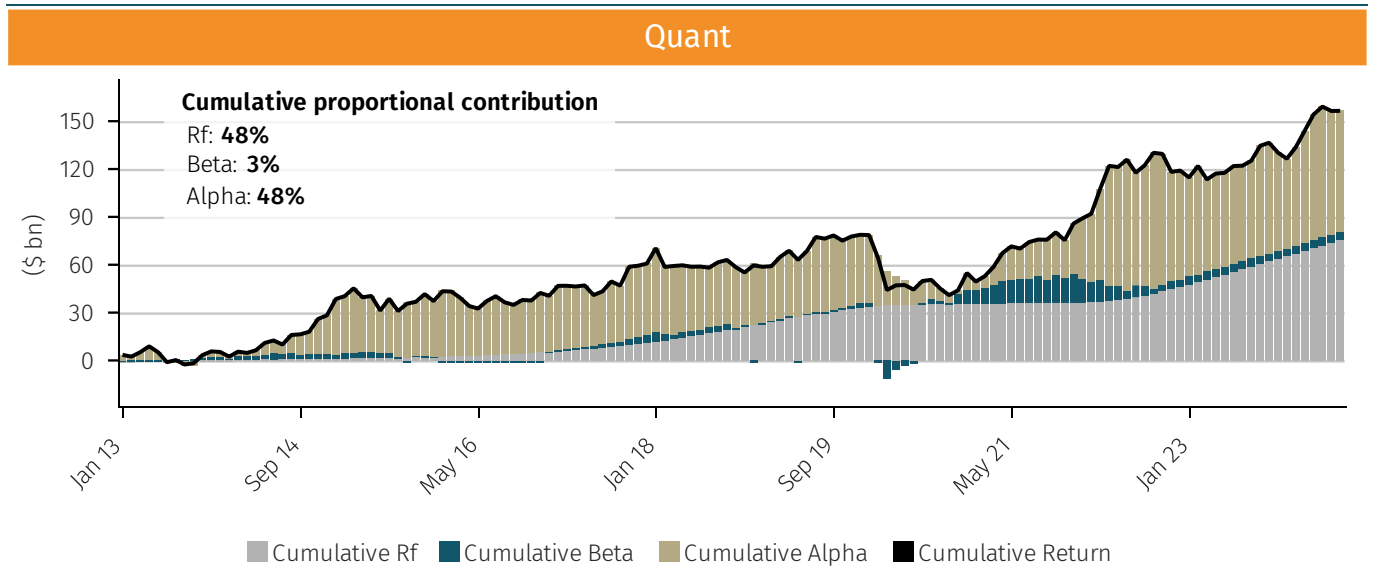
SHARPE RATIO BY HEDGE FUND STRATEGY (3 YR)



BETA TO BONDS AND BETA TO EQUITIES (3 YR) PERIOD TO JUNE 2024



MASTER STRATEGY - DECOMPOSING DOLLAR PERF. INTO ALPHA, BETA AND RISK FREE (RF) COMPONENTS

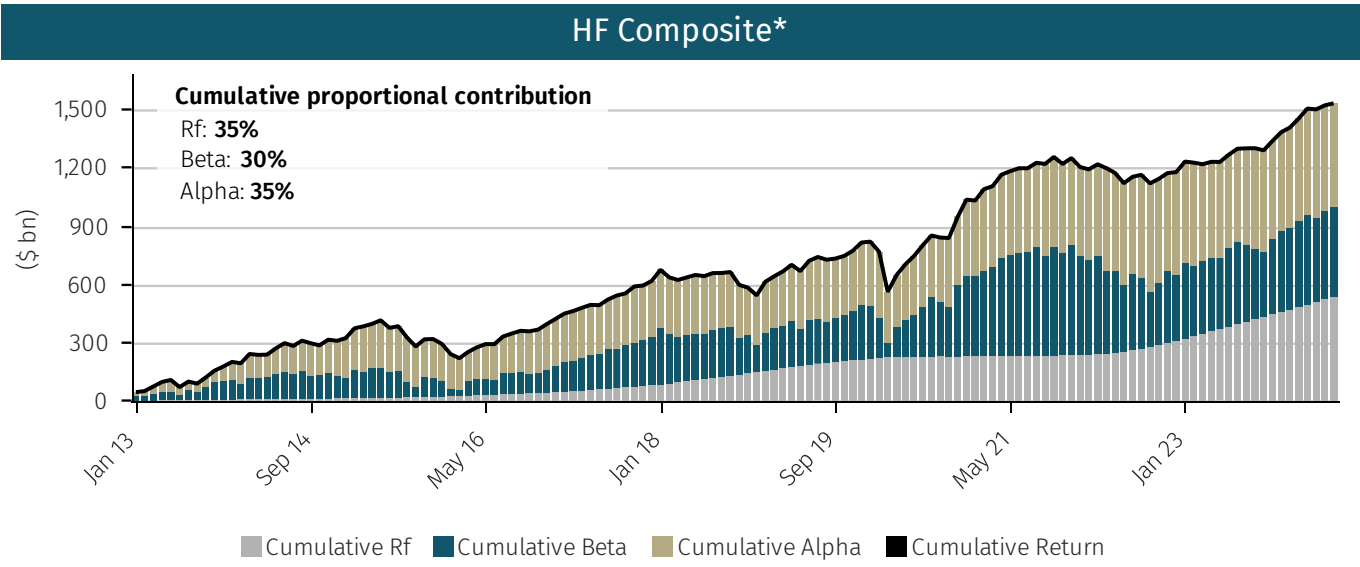


These charts decompose the Hedge Fund Composite dollar returns into beta, alpha and risk free (“Rf”) components, as follows: $\alpha = \text{actual return} - R_f - \beta * (\text{market return} - R_f)$.

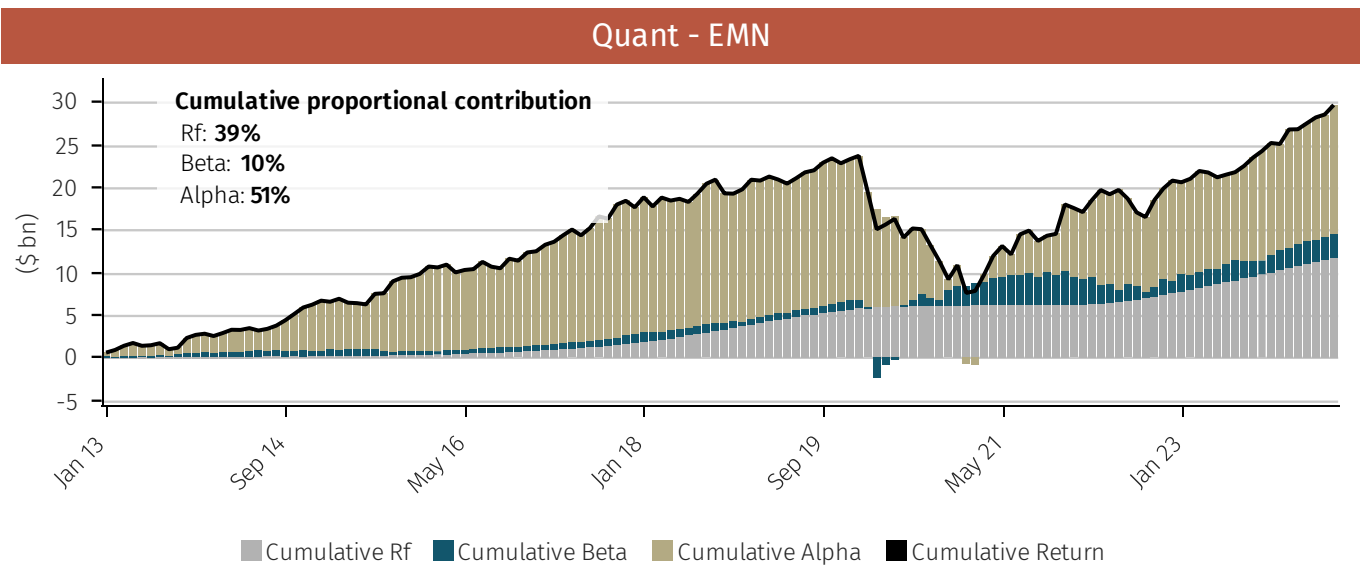
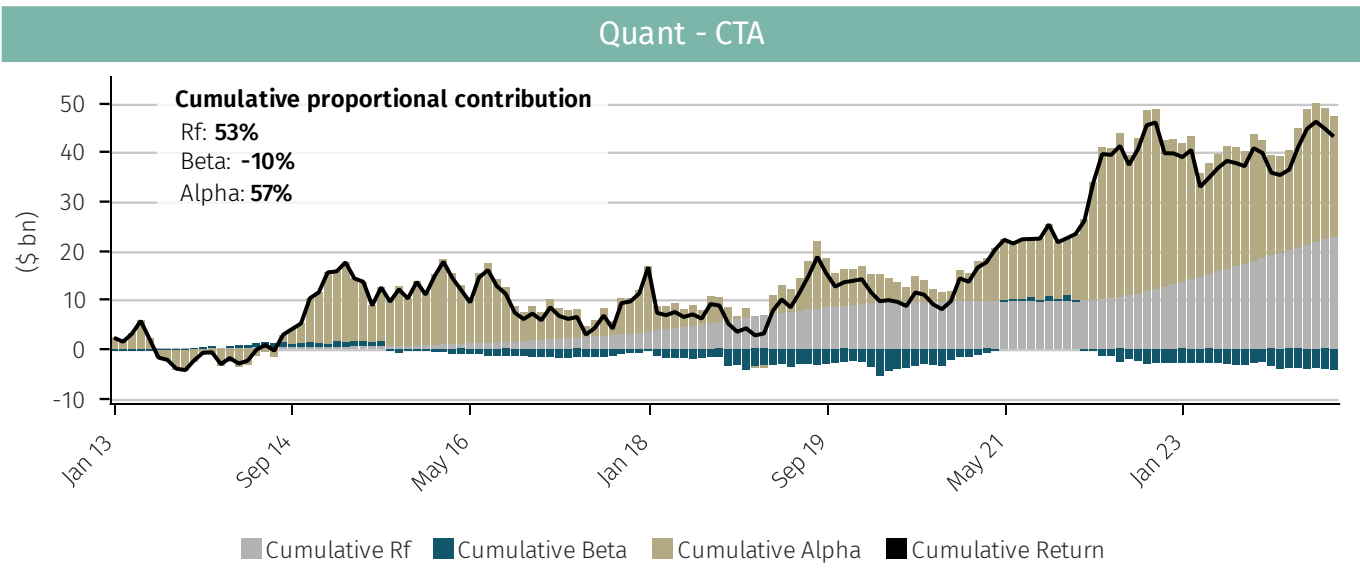
Where R_f is the risk free rate as defined by a rolling 3-month LIBOR-SOFR, where market return is that of S&P Global BMI (‘the market index’) and where beta has been calculated with respect to each underlying fund observed on a 60m rolling basis to the market index. The monthly alpha, beta and R_f components are then applied to each underlying fund’s dollar performance for a particular month, and then at a master strategy or industry level the individual fund dollar contributions are aggregated up.

For note, beta can be negative in certain cases, creating negative dollar attributions. These are offset by corresponding positive alpha contributions.

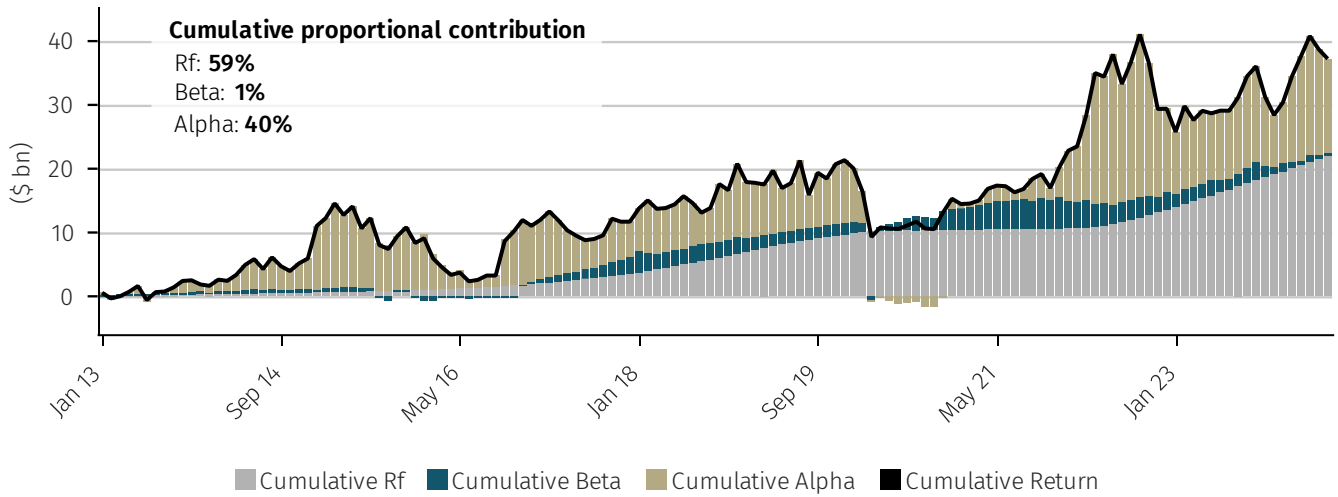
HF COMPOSITE* - DECOMPOSING DOLLAR PERF. INTO ALPHA, BETA AND RISK FREE (RF) COMPONENTS



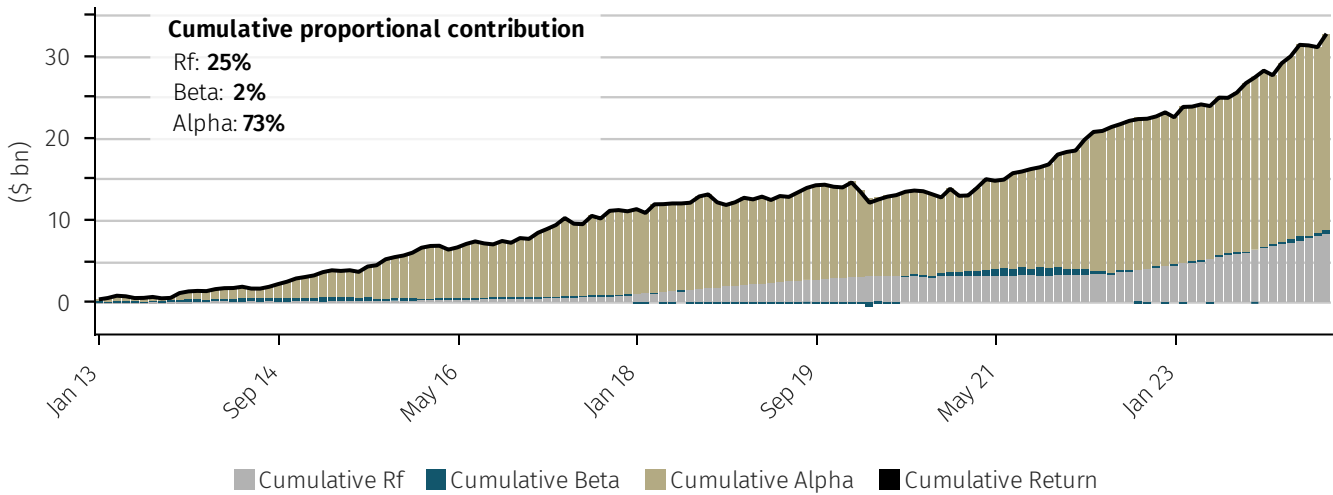
SUB-STRATEGY - DECOMPOSING DOLLAR PERF. INTO ALPHA, BETA AND RISK FREE (RF) COMPONENTS



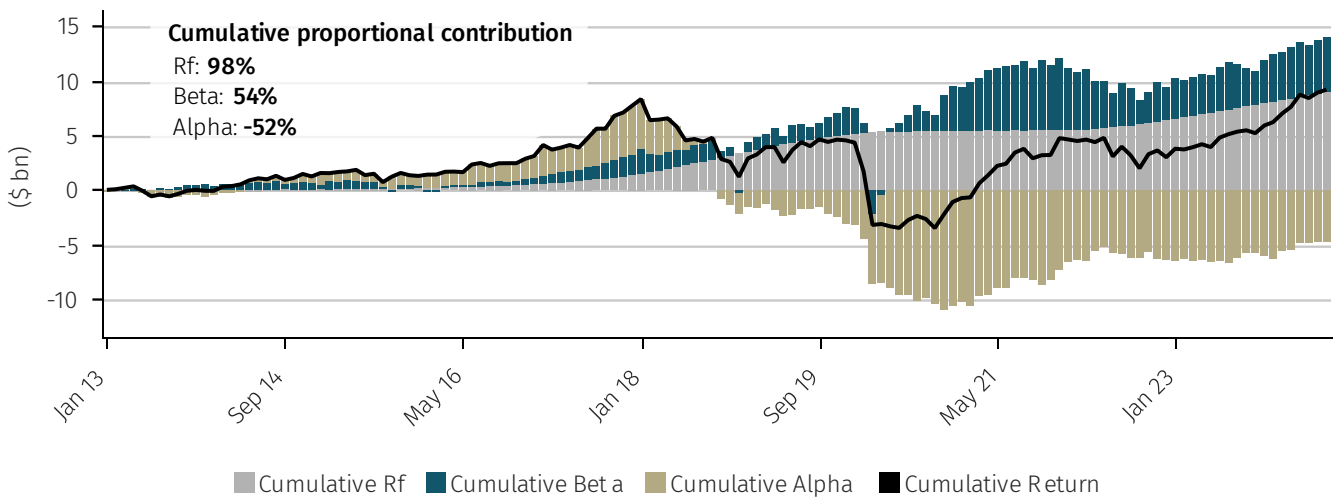
Quant - Macro



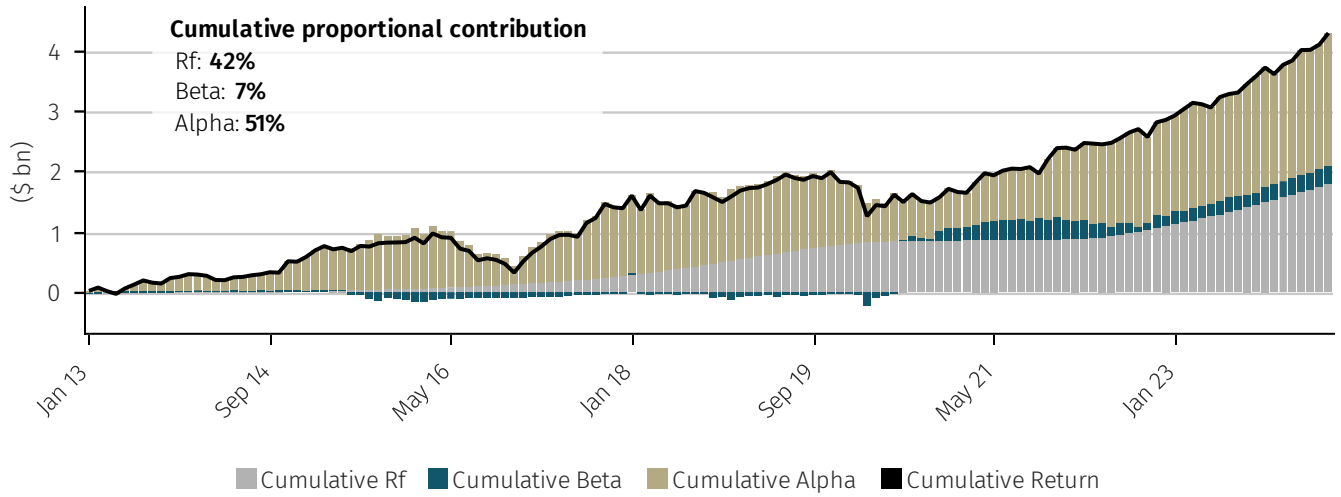
Quant - Multi



Quant - RP

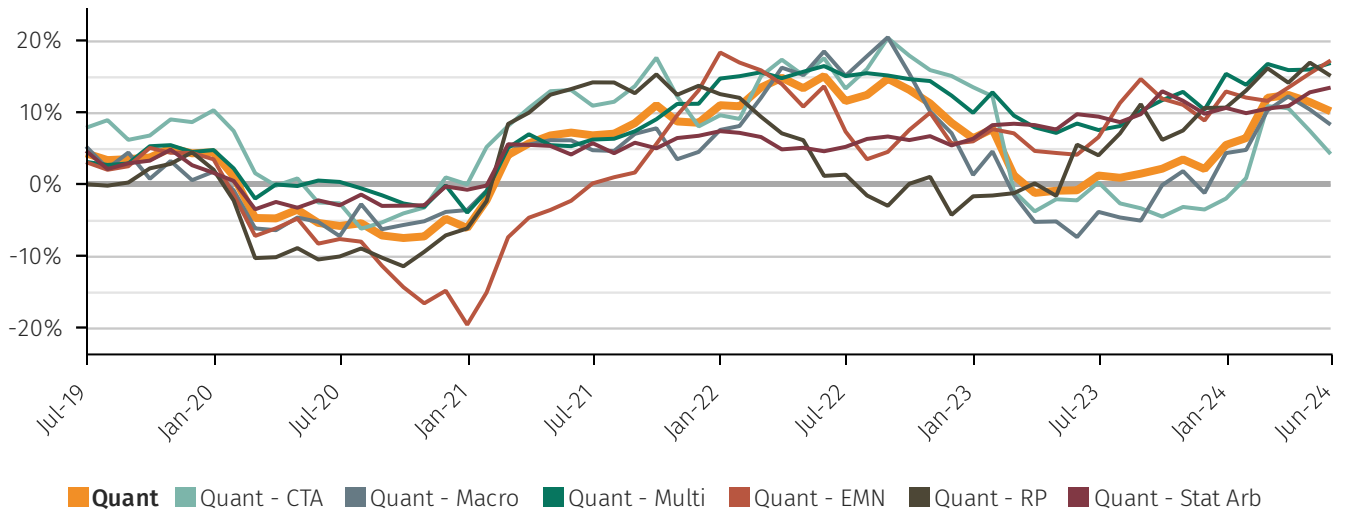


Quant - Stat Arb

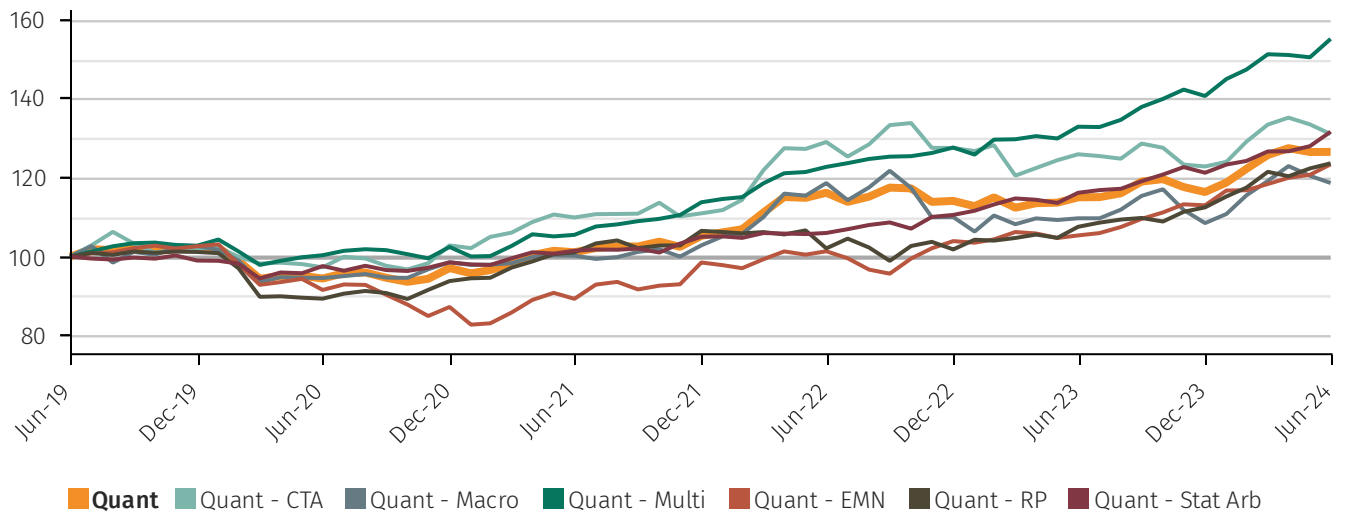


Sub-strategy performance

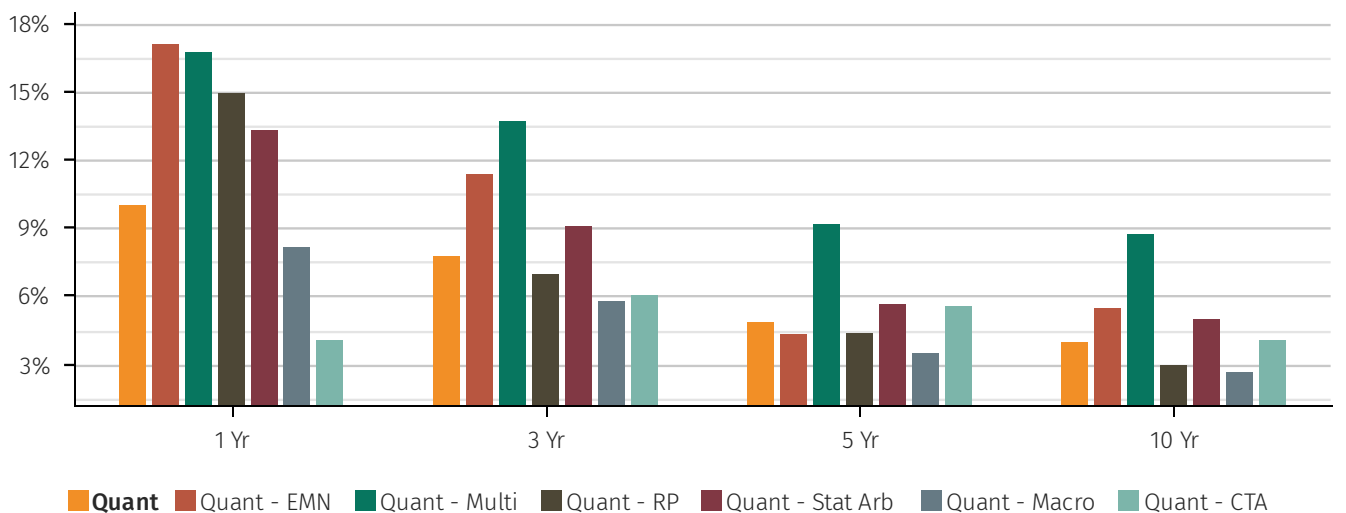
ROLLING 12 MONTH NET RETURN (5 YR)



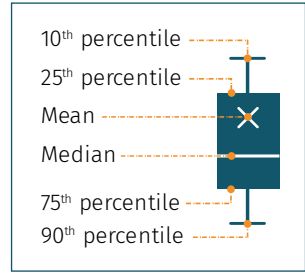
CUMULATIVE NET RETURN (5 YR)



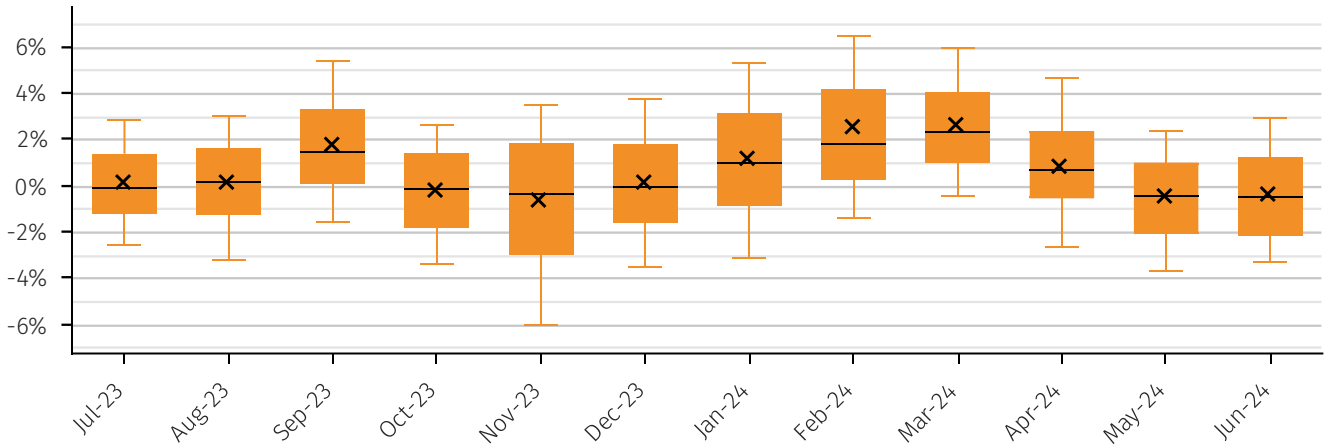
COMPOUND RETURN (ANNUALISED)



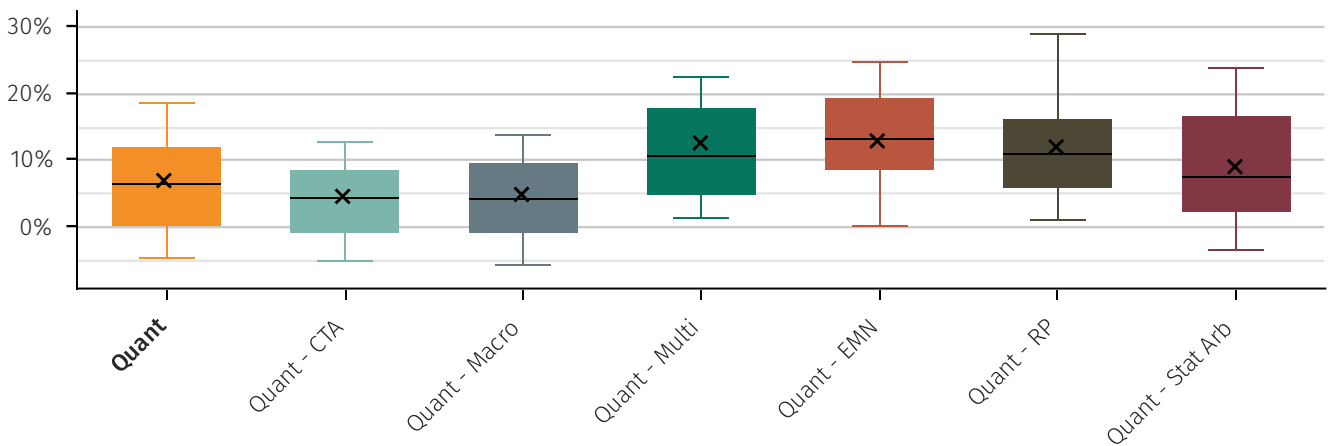
Performance dispersion



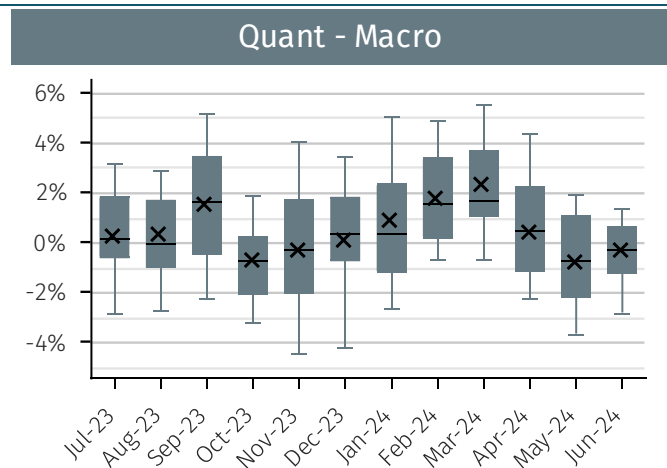
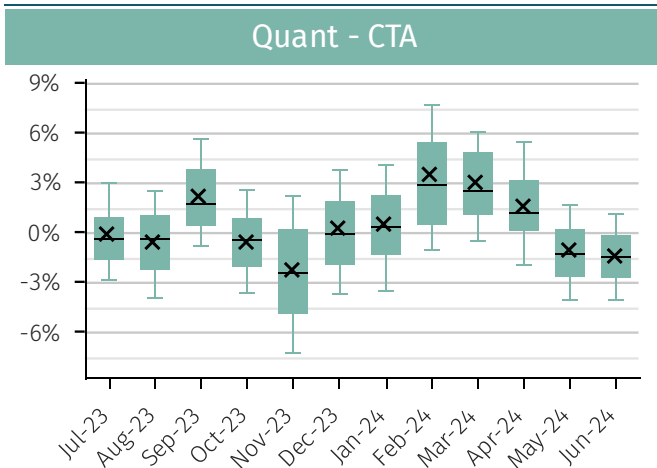
MASTER STRATEGY NET RETURN DISTRIBUTION



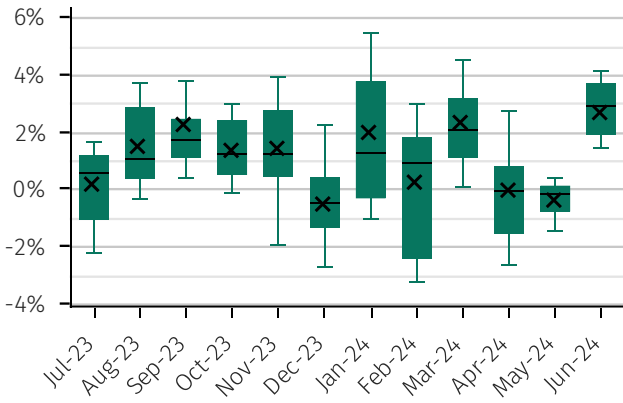
SUB-STRATEGY NET RETURN (H1)



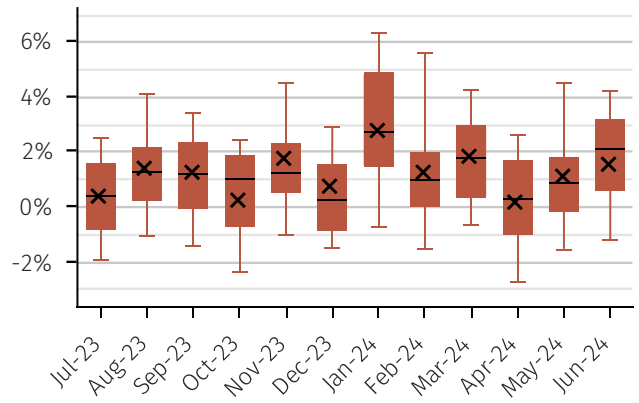
SUB-STRATEGIES NET MONTHLY RETURN DISTRIBUTION



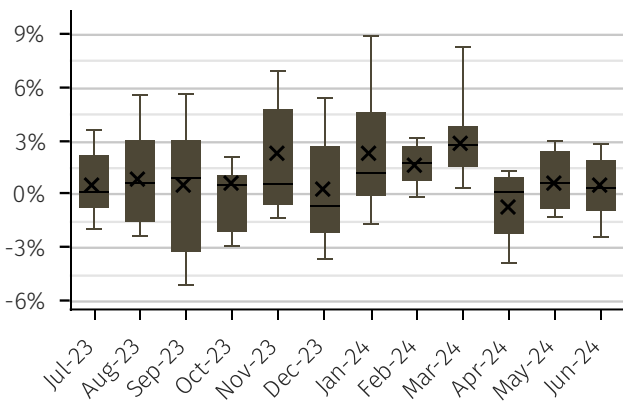
Quant - Multi



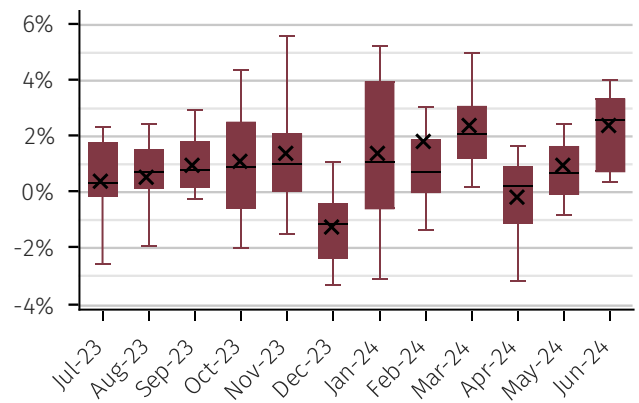
Quant - EMN



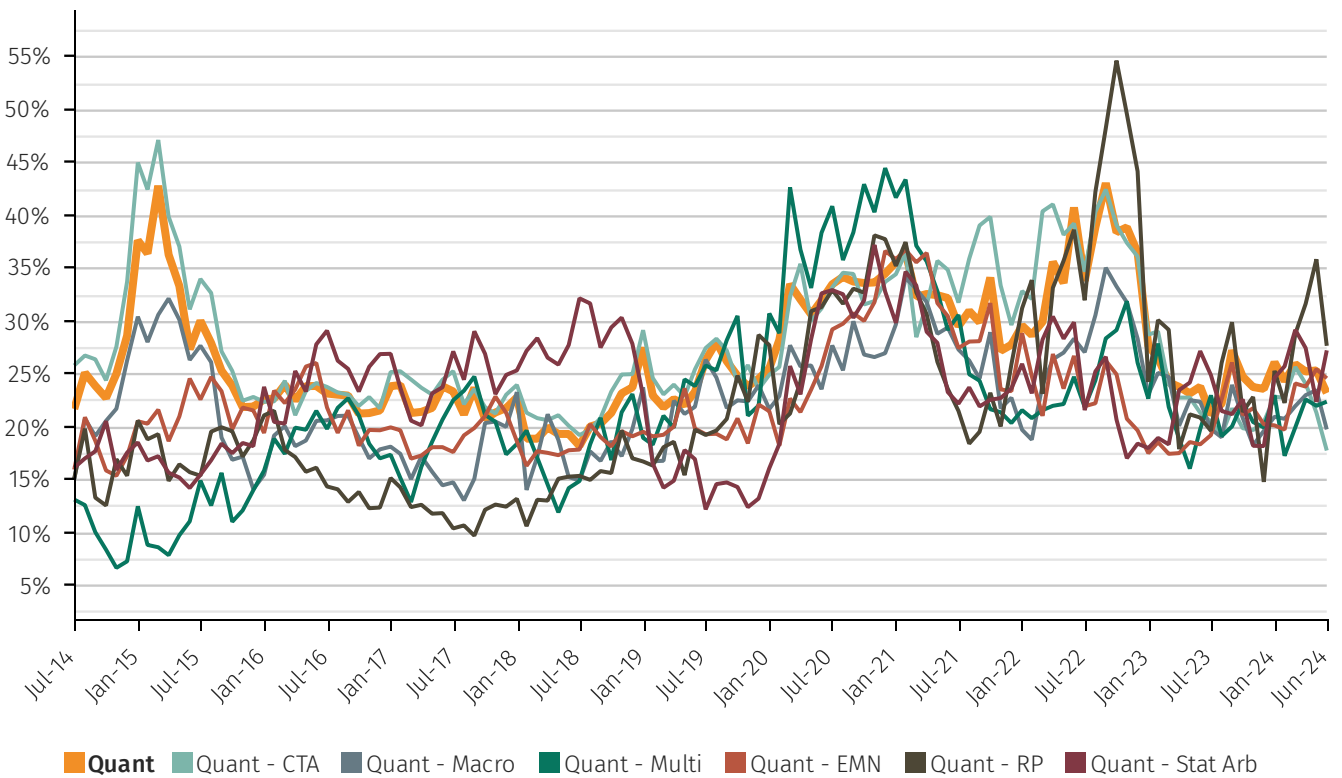
Quant - RP



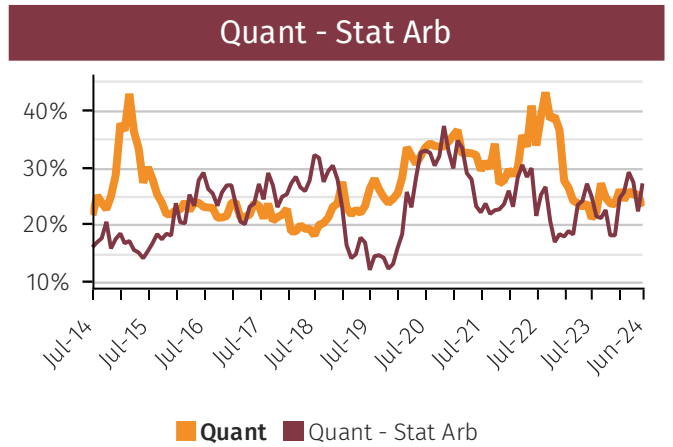
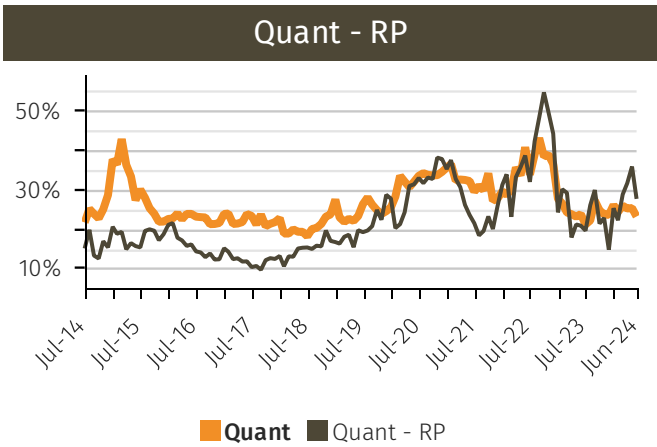
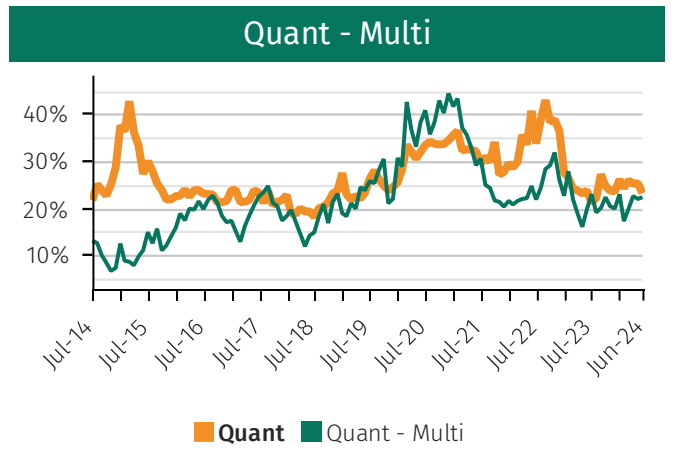
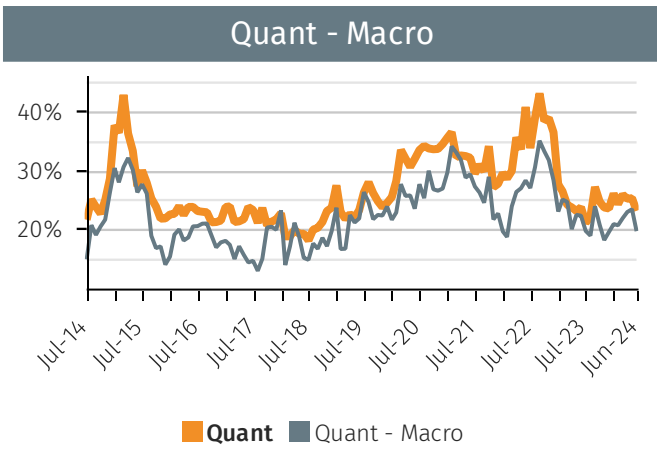
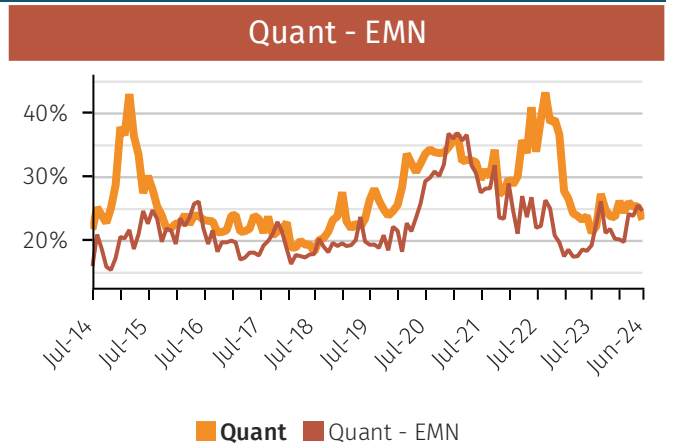
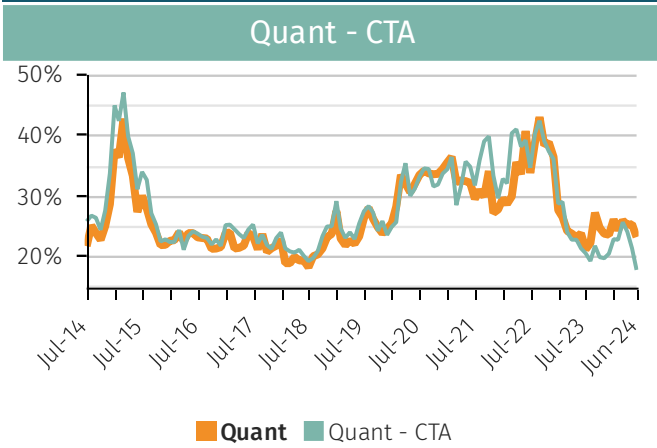
Quant - Stat Arb



10th – 90th PERCENTILE 12M ROLLING PERFORMANCE SPREAD

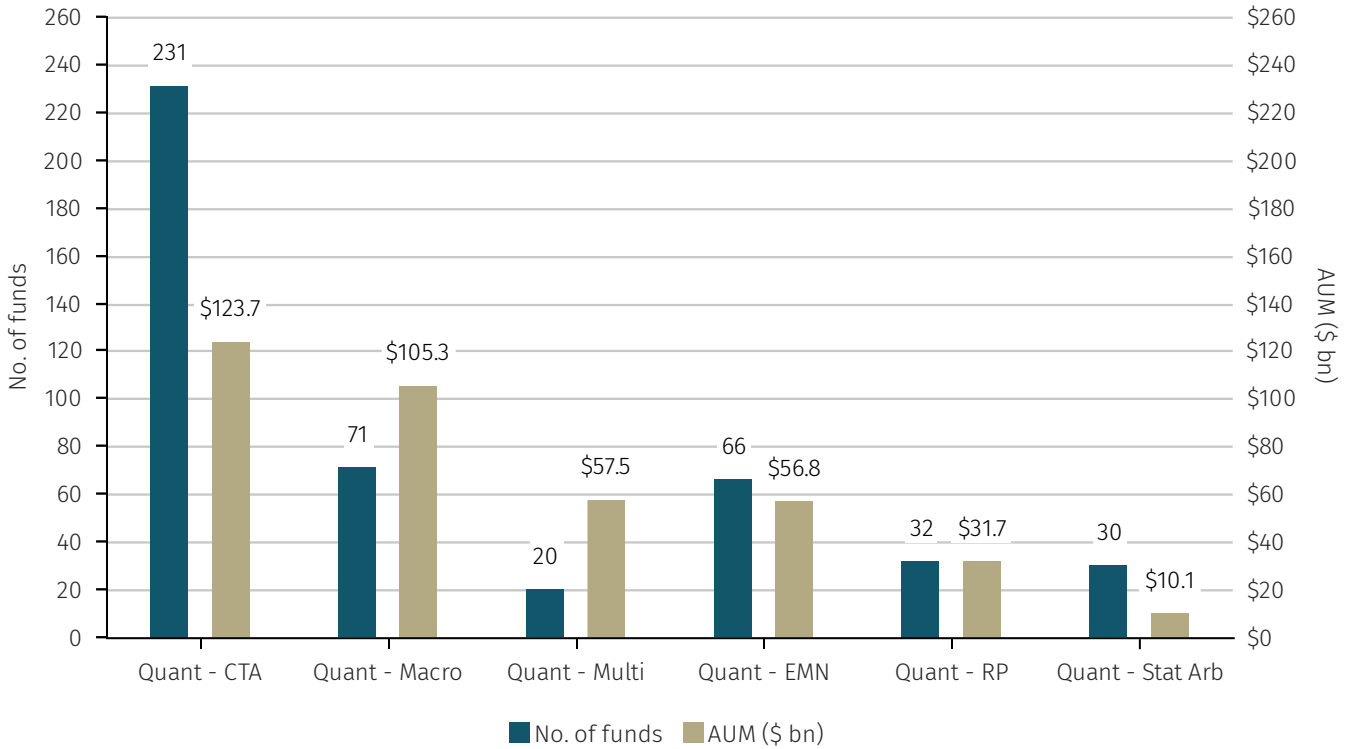


10th – 90th PERCENTILE 12M ROLLING PERFORMANCE SPREAD - SUB STRATEGY VS MASTER STRATEGY

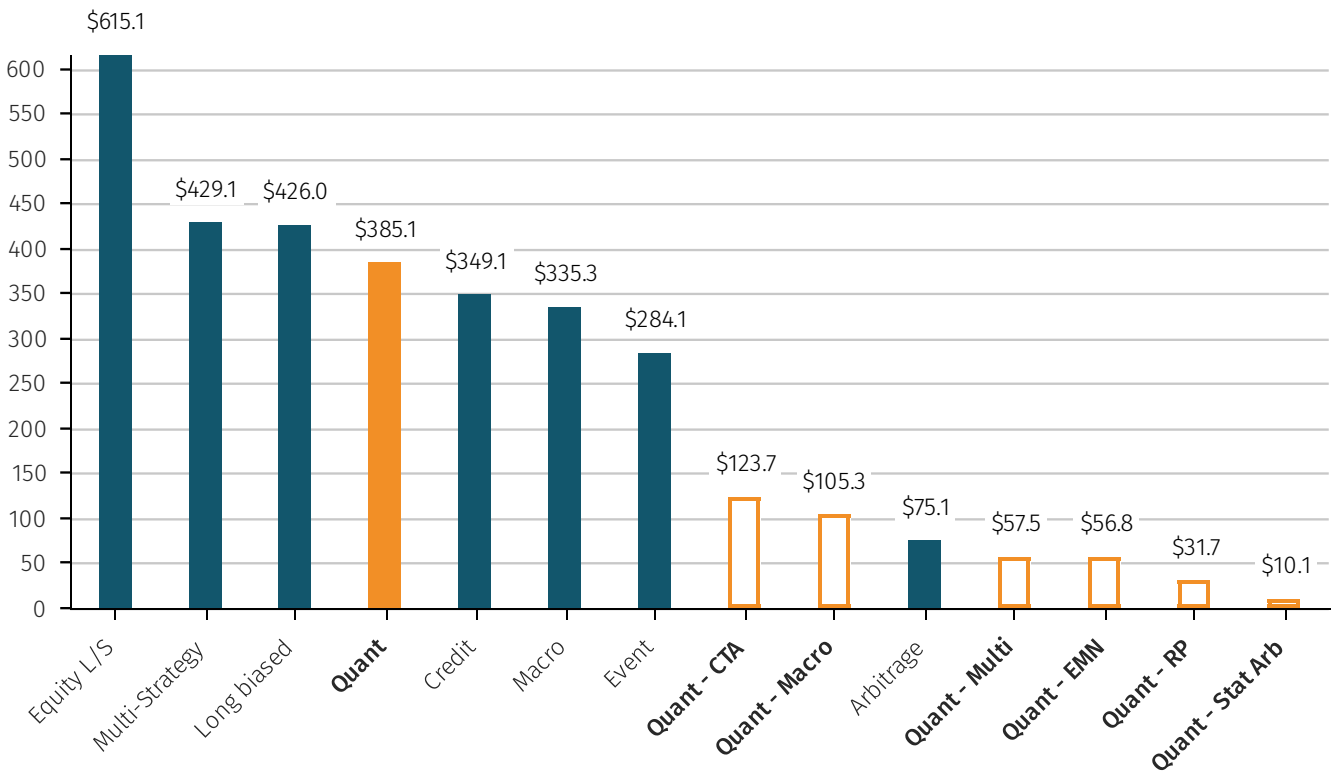


Assets and flows

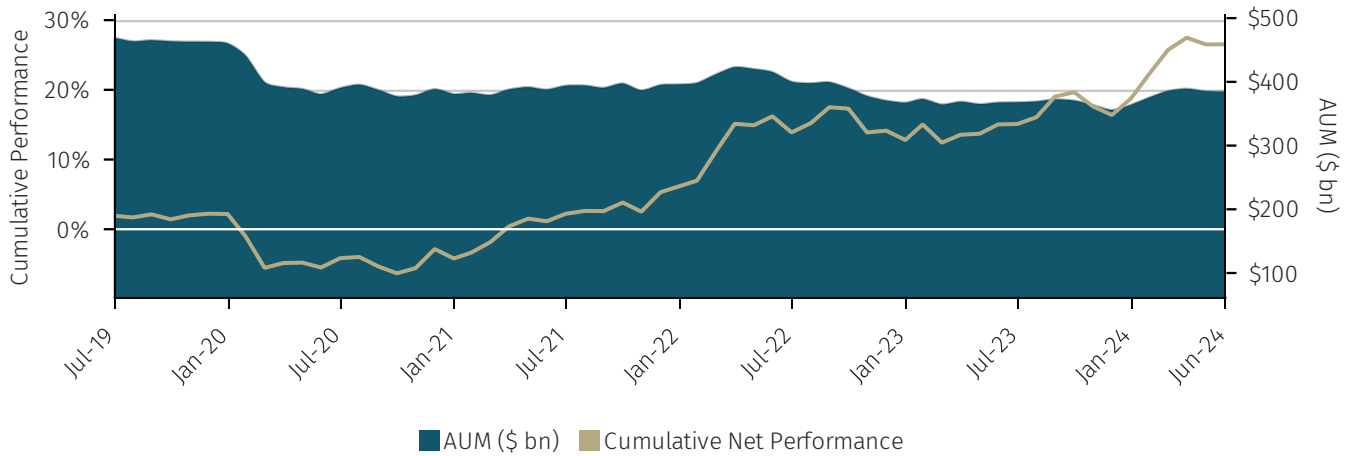
NUMBER OF FUNDS AND AUM BY SUB-STRATEGY



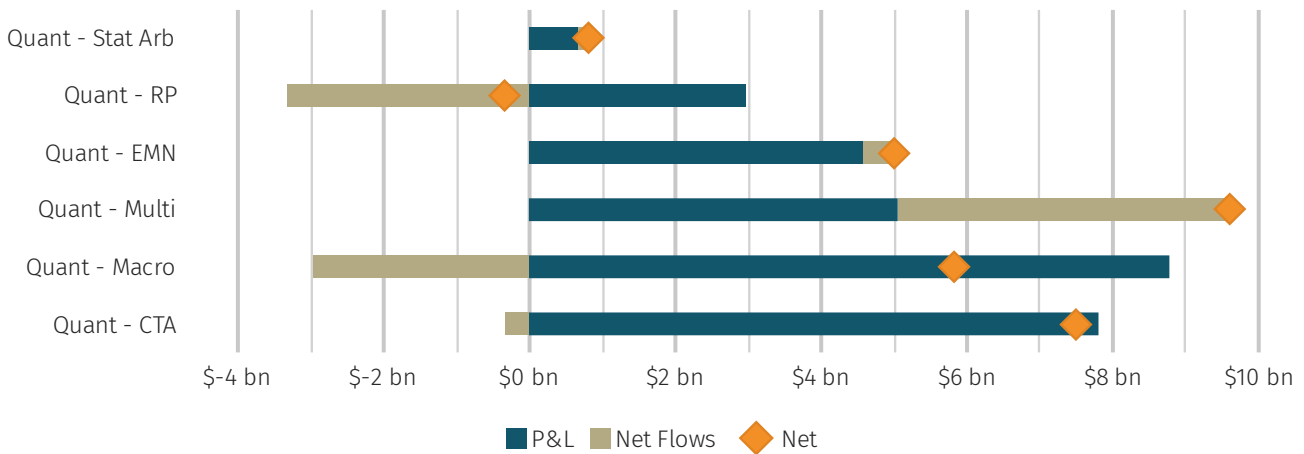
CURRENT AUM OF MASTER STRATEGY (\$ BN)



MASTER STRATEGY ASSETS (5 YR)*



6-MONTH CHANGE IN AUM BY SUB-STRATEGY



Terms and conditions

	Median redemption notice (days)	Median redemption frequency	Weighted avg. redemption total (days) ¹	Weighted avg. management fee	Weighted avg. performance fee
Quant	5	Monthly	52	1.53%	18.23%
CTA (CTA)	5	Monthly	38	1.25%	17.06%
Equity MN (EMN)	30	Monthly	66	1.30%	15.58%
Macro/GAA (Macro)	5	Monthly	28	1.90%	19.12%
Risk premia (RP)	4	Weekly	27	0.65%	5.71%
Statistical arbitrage (Stat Arb)	30	Monthly	111	2.15%	25.22%

1. Weighted Avg. Redemption Total (Days) is the weighted Avg. of both redemptions notice days and redemption frequency days.

Definitions

Quant

Systematic strategies: Funds trade securities based strictly on the buy/sell decisions of computer algorithms. Quant strategies primarily fall into the following categories: Quantitative Equity Market Neutral, Statistical Arbitrage, Quant macro/GAA (Global Asset Allocation), CTA, and risk-premia.

CTA (Quant – CTA)

CTAs (Commodity Trading Advisors) take primarily directional positions in index level or macro instruments, such as futures or FX contracts, in a systematic fashion. Technically, a CTA is a trader of futures contracts as defined by the CFTC and historically, there were many CTAs who were not systematic; such traders are more likely to be classified as 'Global Macro'. CTAs are typically extremely systematised with straight through processing from signal generation to execution. Many, but by no means all, CTAs are trend following (using historical prices to determine predictable 'trending patterns') buying into markets where prices are rising and selling where markets are falling. When rising markets slow down/stop rising, trend-followers typically reduce its position and will eventually reverse its position into a short position, which it will hold until the market starts to rally again. The strategy is known for running with profits and cutting losses. Other models used in CTAs may include carry, seasonality, mean reverting or pattern recognition systems, models driven by fundamental data or non-traditional data sources. Some CTAs can also trade very short-term signals driven by market microstructure anomalies and patterns.

Quant macro / GAA (Quant – Macro)

GAA (Global Asset Allocation) is a systematic approach to Global Macro, with managers taking positions in global markets based on quantitative analysis, taking in information based primarily on economic data, but also incorporating price related information. The strategy is highly data and technology intensive. The positions tend to be relative value based, but they may also take directional positions in instruments such as futures, FX and baskets of equities, ETFs, swaps and other instruments. Signals may be arranged into relative value asset class models, cross asset class models / directional trades. Signals are also often classified under a number of factor headings: value, carry, momentum etc.

Multi strategy (Quant – Multi)

A hedge fund where the capital is deployed across multiple sub-strategies and asset classes. The overwhelming driver of returns will come from quantitative sub-strategies typically falling into two or more of the following categories: Statistical arbitrage and/or quant equity market neutral; CTA and/or quant macro; volatility arbitrage; quantitative event-driven. Please refer to specific sub-strategy definitions for further detail. In some instances, quantitative multi-strategy funds may also trade discretionary elements, however, these will be a far smaller driver of overall P&L. Should non-quantitative strategies drive a large proportion of overall P&L the fund will be classified as a multi-strategy fund.

Statistical arbitrage (Stat Arb)

Statistical arbitrage funds typically take price data and its derivatives, such as correlation, volatility and other forms of market data, such as volume and order-book information to determine the existence of patterns. These patterns can help the manager forecast the future return of a stock, often over a relatively short timeframe. Typical signal types are: mean-reversion, momentum and event-driven. Mean-reversion looks to take advantage of the phenomenon of short-term price movements occurring due to supply/demand imbalances then moving back to an equilibrium level. Momentum models look for patterns in price data that suggest that price movements will be more persistent (i.e., trend). Other statistical arbitrage funds will look to incorporate more discrete information into their process from events (e.g., publishing of analyst earnings estimates, news flow, etc.). Whilst statistical arbitrage funds tend to focus more on 'technical' models, some may also incorporate some longer-term models that are driven by fundamental data (e.g., stock value models, growth, etc.), however, if these models are the more dominant driver of risk, then the fund is likely to be classified as Quantitative Equity Market Neutral. Statistical arbitrage funds are typically run with a very low level of beta and are market neutral, however, this may not always be the case, with some funds able to take significant directional risk; however, given the higher frequency trading nature of such funds, they are not expected to have significant correlation to markets over time.

Quant equity market neutral (Quant EMN)

Traditional QEMN strategies take fundamental data, such as analyst earnings estimates, balance sheet information and cash flow statement statistics, and systematically rank/score stocks against these metrics in varying proportions. The weights of the scores of the different fundamental data sources may be fixed or dynamic. Managers may construct a portfolio using an optimisation process or by applying simpler rules combined with risk constraints so as to create a portfolio that is dollar and/or beta neutral, and typically with minimal sector exposure. Traditional QEMN portfolios consists of exposure to: Value (looking for stocks mispriced relative to their fundamental value, e.g. based on P/E, P/B, cash flow, etc.); Quality (looking at metrics such as levels of debt, stability of earnings growth, balance sheet strength); momentum (looking at past returns over a preset timeframe ranging from days to months); however, these are common factors that are relatively easy to exploit/replicate - hence the proliferation of risk-premia products that operate in this space.

Risk premia (Quant – RP)

Hedge fund risk premia products typically seek to capture the fundamental insights of a class of hedge fund strategies (hedge fund risk premia / alternative risk premia) along with a meaningful proportion of the expected returns those strategies can earn - using a dynamic but clearly defined process. Funds typically have exposure to a well-diversified portfolio of hedge-fund premia. Premia can cover everything from equity premia (Equity market neutral - trading across value, quality, growth and momentum factors, as well as EM premia), macro premia (e.g., trend following, or EM premia), to arbitrage strategies (e.g., risk arbitrage - holding a portfolio of merger targets diversified by sector and deal type; convertible arbitrage, etc.). The strategies are typically very well understood, backed up by academic research and implemented systematically.

Bond Index

BLOOMBERG® is a trademark and service mark of Bloomberg Finance L.P. and its affiliates (collectively “Bloomberg”). Bloomberg or Bloomberg’s licensors own all proprietary rights in the Bloomberg Indices. Bloomberg does not approve or endorse this material or guarantee the accuracy or completeness of any information herein, nor does Bloomberg make any warranty, express or implied, as to the results to be obtained therefrom, and, to the maximum extent allowed by law, Bloomberg shall not have any liability or responsibility for injury or damages arising in connection therewith.

Equity Index

The S&P Global BMI (the “S&P Index”) is a product of S&P Dow Jones Indices LLC, its affiliates and/or their licensors and has been licensed for use by Aurum Research Limited. Copyright © 2021 S&P Dow Jones Indices LLC, its affiliates and/or their licensors. All rights reserved. Redistribution or reproduction in whole or in part are prohibited without written permission of S&P Dow Jones Indices LLC. For more information on any of S&P Dow Jones Indices LLC’s indices please visit www.spdji.com. S&P® is a registered trademark of Standard & Poor’s Financial Services LLC and Dow Jones® is a registered trademark of Dow Jones Trademark Holdings LLC. Neither S&P Dow Jones Indices LLC, Dow Jones Trademark Holdings LLC, their affiliates nor their third party licensors make any representation or warranty, express or implied, as to the ability of any index to accurately represent the asset class or market sector that it purports to represent and neither S&P Dow Jones Indices LLC, Dow Jones Trademark Holdings LLC, their affiliates nor their third party licensors shall have any liability for any errors, omissions, or interruptions of any index or the data included therein.

By accepting delivery of this Paper, the reader: (a) agrees it will not extract any index values from the Paper nor will it store, reproduce or further distribute the index values to any third party for any purpose in any format or by any means except that reader may store the Paper for its personal, non-commercial use; (b) acknowledges and agrees that S&P own the S&P Index, the associated index values and all intellectual property therein and (c) S&P disclaims any and all warranties and representations with respect to the S&P Index.

Note regarding decomposition returns

Please note that the charts and figures which reference the decomposition of dollar performance into alpha, beta and risk free components only use data from January 2013, unlike other charts and figures which use data for the full 10 year period, namely August 2012. This variance in time period used to present data is due to there being insufficient data to accurately construct a decomposition for the period of August 2012 to December 2012.

AURUM

Aurum Fund Management Ltd.

Aurum House
35 Richmond Road
Hamilton HM08
Bermuda
Telephone: +1 441 292 6952

Website: www.aurum.com
Email: ir@aurumfunds.com

Aurum Funds Limited

Ixworth House
37 Ixworth Place
London
SW3 3QH
Telephone: +44 (0)20 7589 1130

Waystone Investment Management (IE) Limited

4th Floor, Shelbourne Road,
Ballsbridge
Dublin D04 A4E0
Ireland

Aurum Fund Management Ltd. is licensed by the Bermuda Monetary Authority

Aurum Funds Limited is authorised and regulated by the Financial Conduct Authority in the UK

DISCLAIMER

The information contained in this Paper (the "Paper") is issued and approved by Aurum Funds Limited of Ixworth House, 37 Ixworth Place, London, SW3 3QH, United Kingdom. Aurum Funds Limited, which is authorised and regulated in the UK by the Financial Conduct Authority, is wholly owned by Aurum Fund Management Ltd. of Bermuda ("Aurum").

This Paper does not constitute an offer to sell or a solicitation of an offer to buy or endorsement of any interest in any fund or hedge fund strategy.

This Paper is for informational purposes only and not to be relied upon as investment, legal, tax, or financial advice. Whilst the information contained in this Paper (including any expression of opinion or forecast) has been obtained from, or is based on, sources believed by Aurum to be reliable, it is not guaranteed as to its accuracy or completeness. This Paper is current only at the date it was first published and may no longer be true or complete when viewed by the reader. This Paper is provided without obligation on the part of Aurum and its associated companies and on the understanding that any persons who acting upon it or changes their investment position in reliance on it does so entirely at their own risk. In no event will Aurum or any of its associated companies be liable to any person for any direct, indirect, special or consequential damages arising out of any use or reliance on this Paper, even if Aurum is expressly advised of the possibility or likelihood of such damages.

References to Aurum Hedge Fund Data Engine refer to Aurum's proprietary Hedge Fund Data Engine database maintained by Aurum Research Limited ("ARL") containing data on around 3,400 active hedge funds representing around \$3.0 trillion of assets as at June 2024. Information in the database is derived from multiple sources including Aurum's own research, regulatory filings, public registers and other database providers. Performance in the charts using Aurum Hedge Fund Data Engine data are asset weighted unless otherwise stated.

An investment in a hedge fund should be considered a speculative investment. Past performance is no guarantee of future returns.

Data from the Aurum Hedge Fund Data Engine is provided on the following basis: (1) Aurum Hedge Fund Data Engine data is provided for informational purposes only; (2) information and data included in the Aurum Hedge Fund Data Engine are obtained from various third party sources including Aurum's own research, regulatory filings, public registers and other data providers and are provided on an "as is" basis; (3) Aurum does not perform any audit or verify the information provided by third parties; (4) Aurum is not responsible for and does not warrant the correctness, accuracy, or reliability of the data in the Aurum Hedge Fund Data Engine; (5) any constituents and data points in the Aurum Hedge Fund Data Engine may be removed at any time; (6) the completeness of the data may vary in the Aurum Hedge Fund Data Engine; (7) Aurum does not warrant that the data in the Aurum Hedge Fund Data Engine will be free from any errors, omissions or inaccuracies; (8) the information in the Aurum Hedge Fund Data Engine does not constitute an offer or a recommendation to buy or sell any security or financial product or vehicle whatsoever or any type of tax or investment advice or recommendation; (9) past performance is no indication of future results; and (10) Aurum reserves the right to change its Aurum Hedge Fund Data Engine methodology at any time and may elect to suppress or change underlying data should it be considered optimal for representation and/or accuracy.